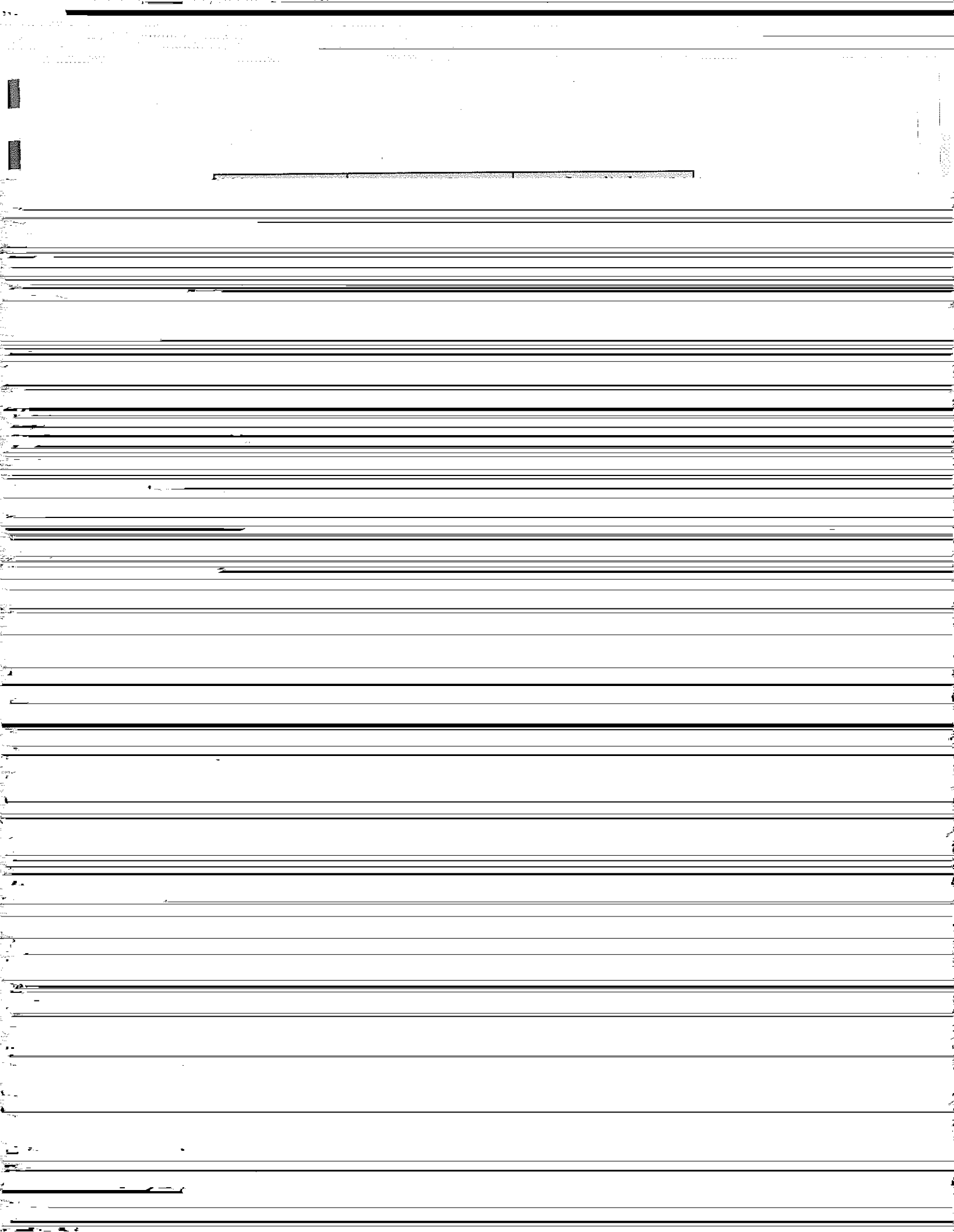


MA 4 1997/00

SCHEDULE

PART 1 – GEOGRAPHIC COORDINATES

- 1 The outer limit of the contiguous zone of Niue is the line commencing at point NUCZ00001 in the following table and running along the geodesics sequentially connecting each point in the table.

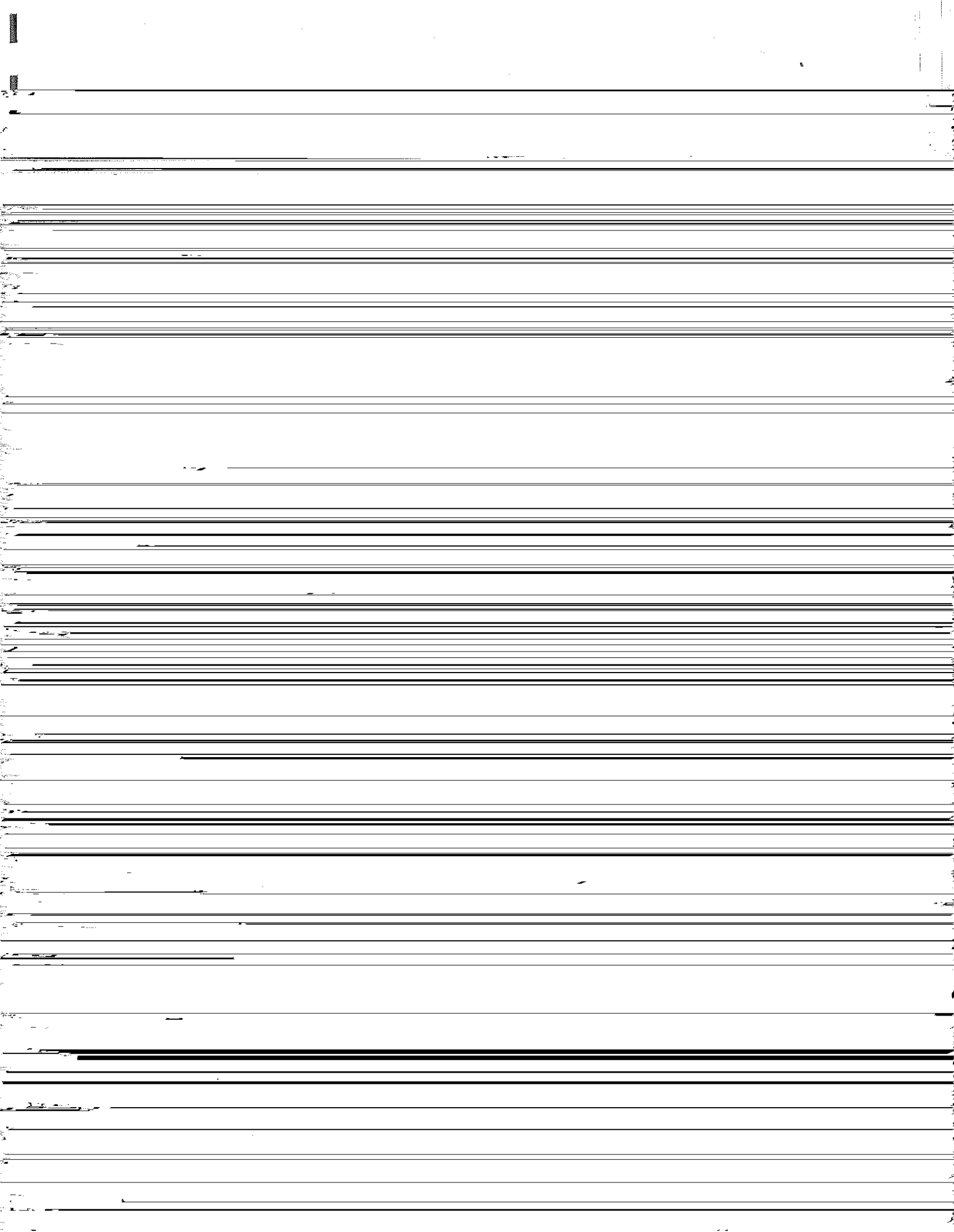




Point Identifier	Latitude	Longitude
	42° 30' 00.00" S	120° 30' 10.00" W



Point Identifier	Latitude	Longitude
------------------	----------	-----------

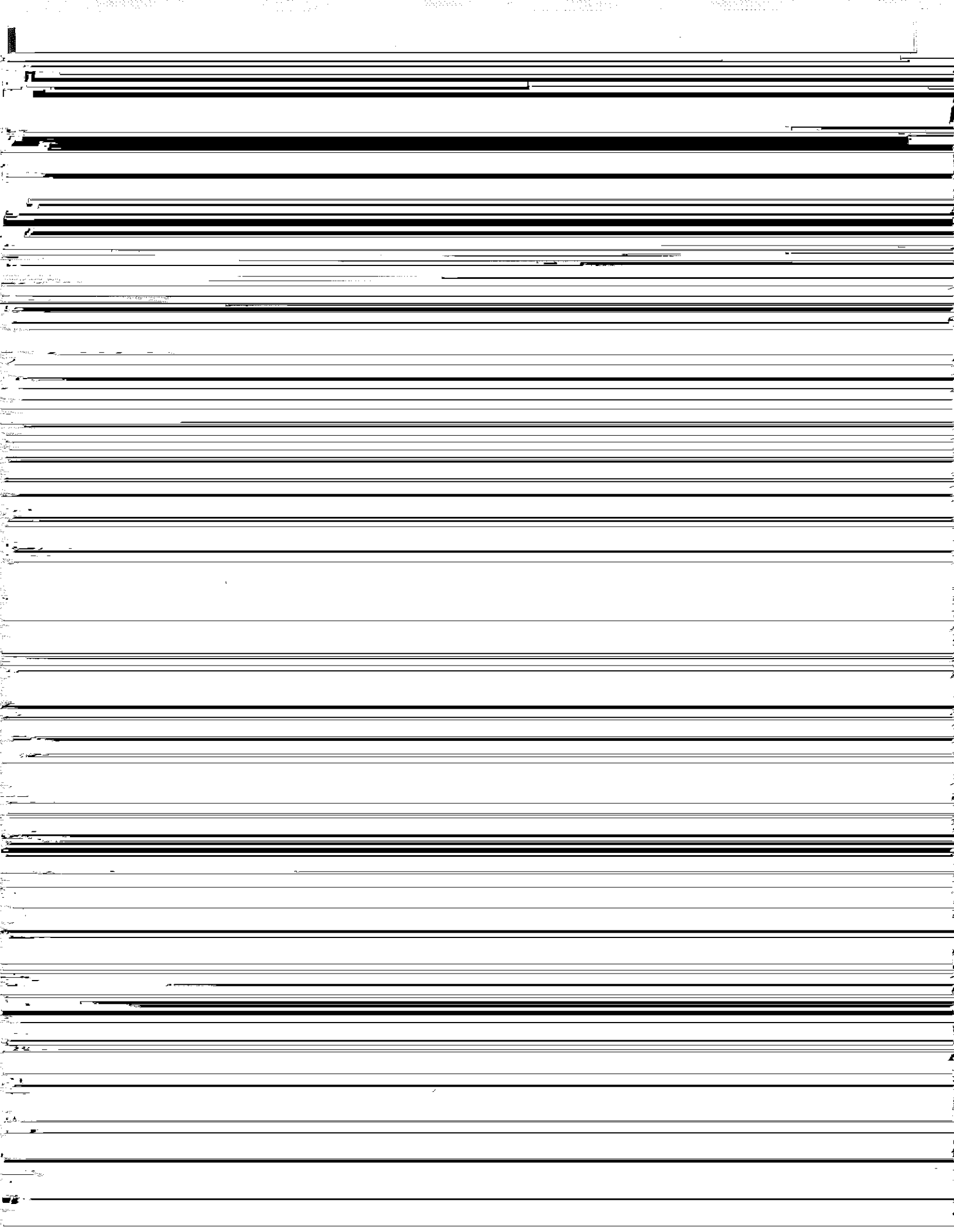


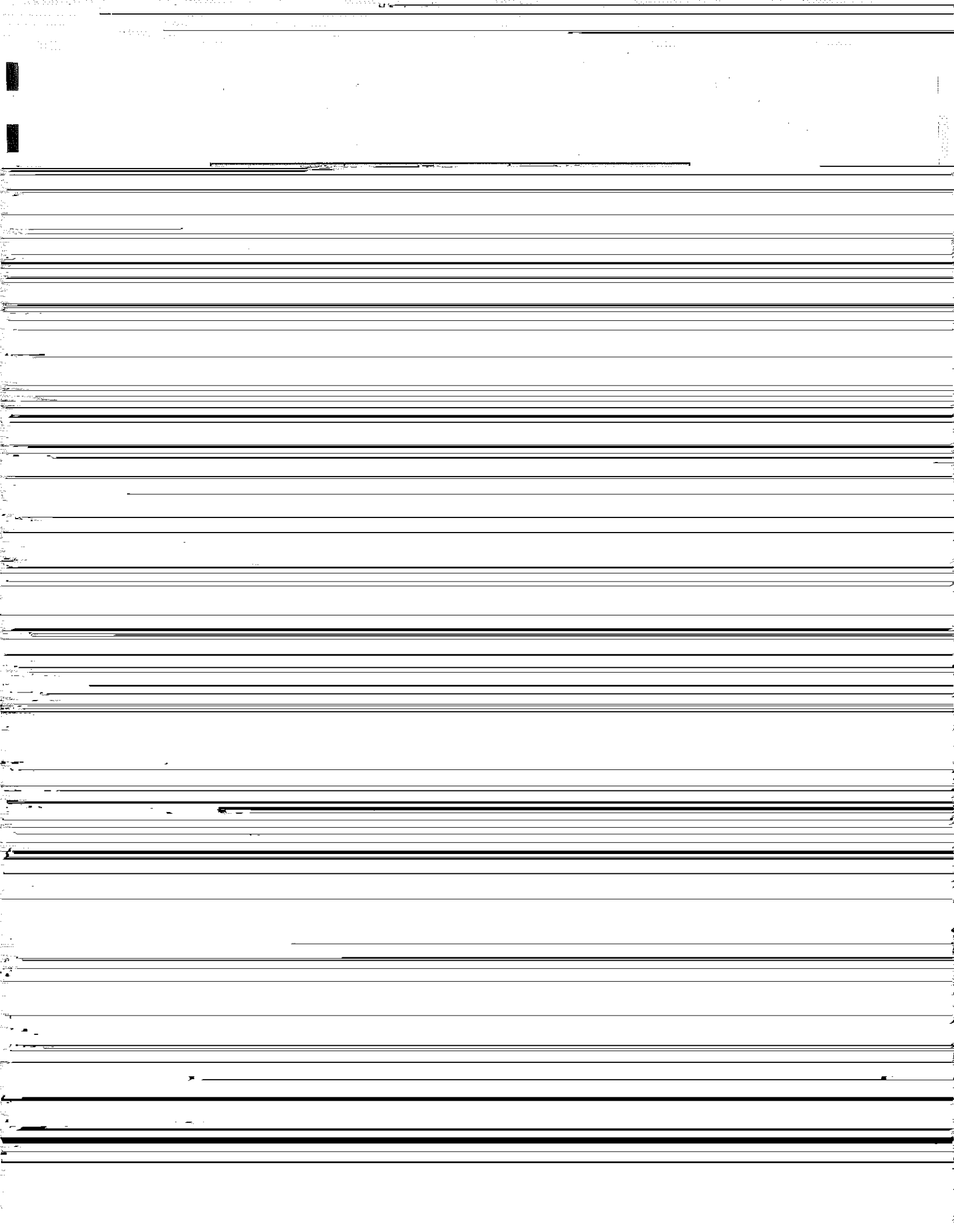


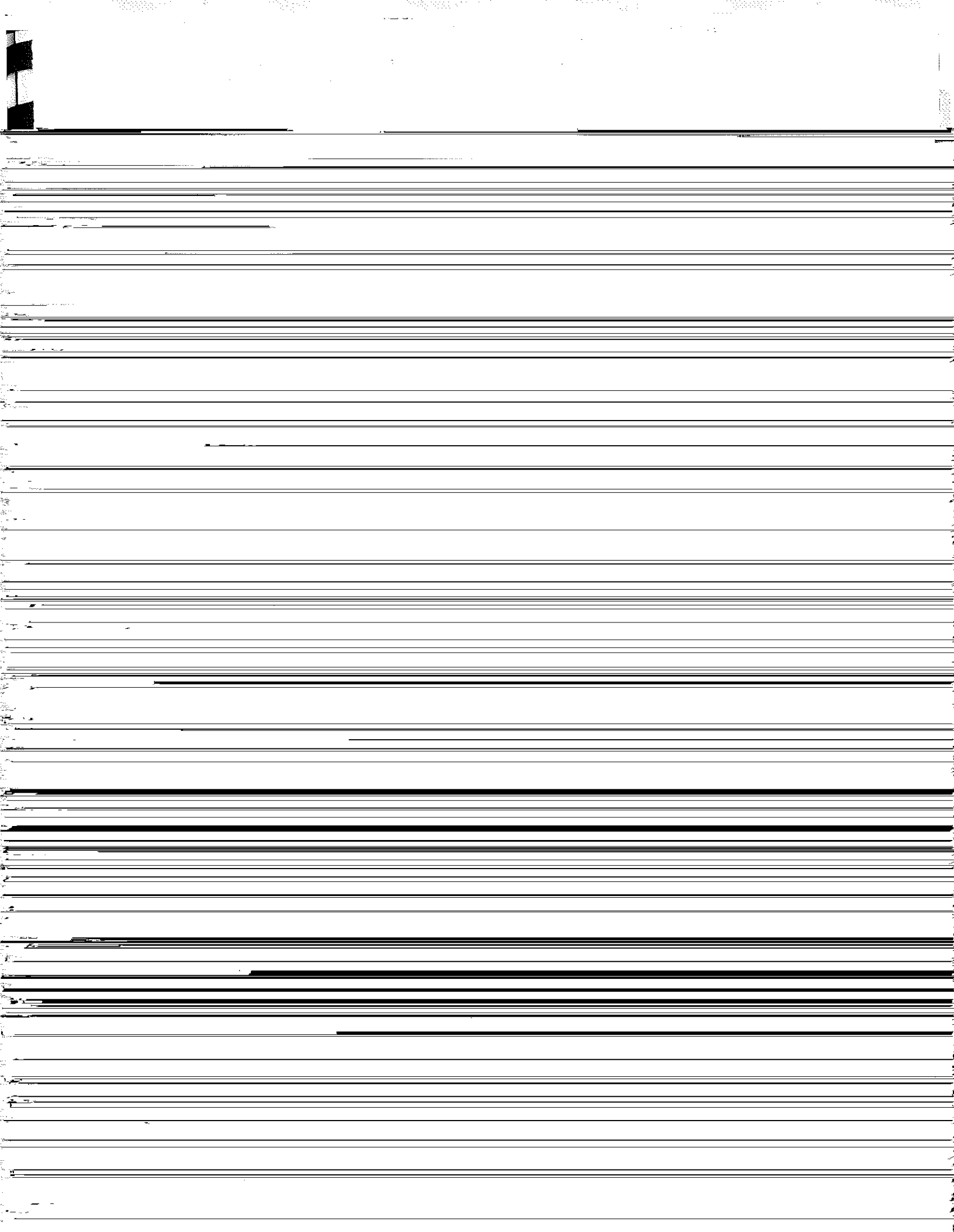
Point Identifier	Latitude	Longitude
NUCZ00197	18° 36' 27.05" S	170° 04' 53.97" W

Point Identifier	Latitude	Longitude
NUCZ00247	18° 47' 15.46" S	170° 16' 29.56" W
NUCZ00248	18° 47' 31.45" S	170° 16' 40.42" W
NUCZ00249	18° 47' 47.58" S	170° 16' 51.06" W
NUCZ00250	18° 48' 03.84" S	170° 17' 01.47" W
NUCZ00251	18° 48' 20.23" S	170° 17' 11.66" W
NUCZ00252	18° 48' 36.74" S	170° 17' 21.61" W

0.1 0.2 0.3 0.4 0.5 0.6 0.7 0.8 0.9 1.0



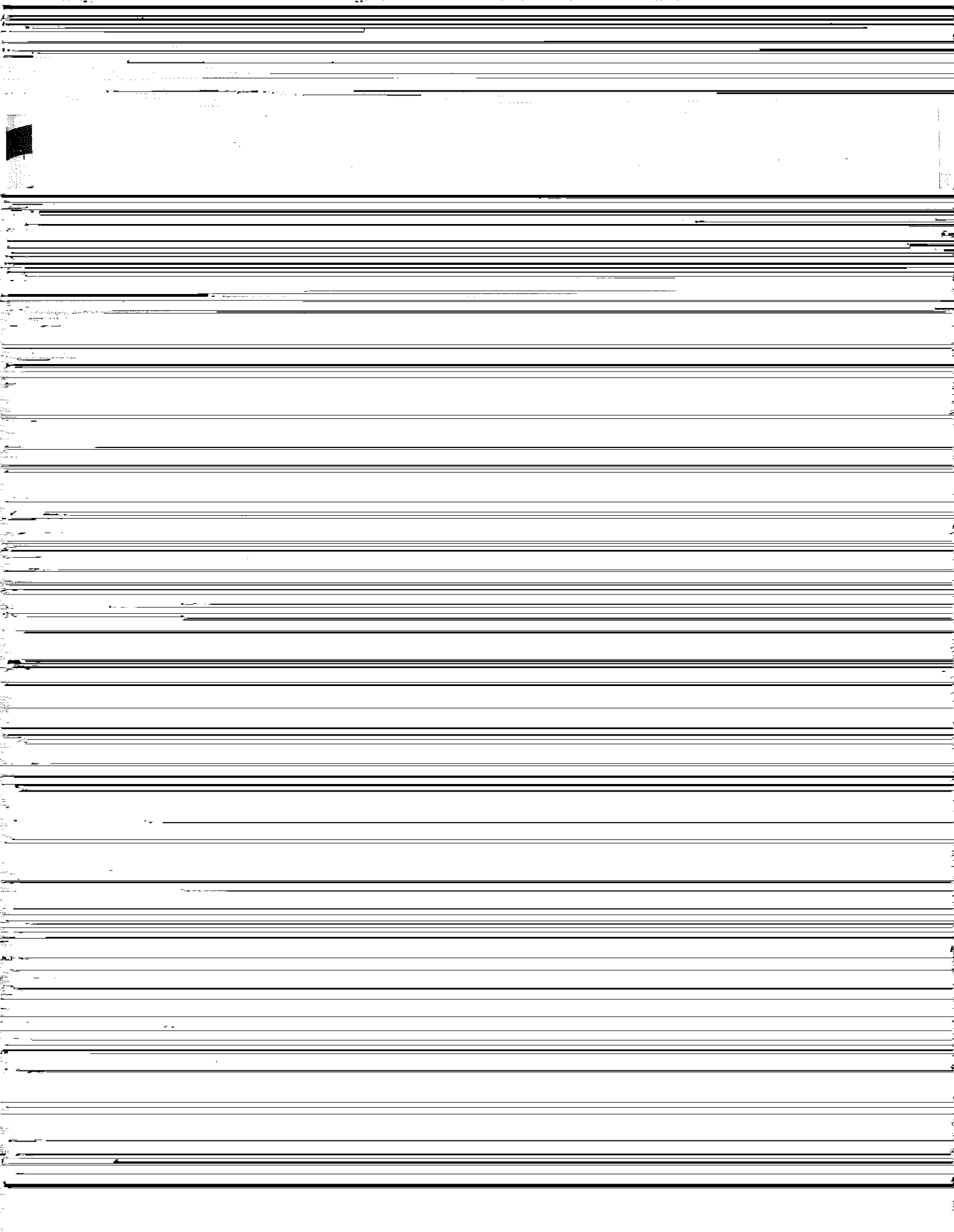






Point Identifier	Latitude	Longitude
NUCZ00422	19° 32' 18.92" S	170° 00' 23.77" W
NUCZ00423	19° 32' 24.53" S	170° 00' 04.47" W
NUCZ00424	19° 32' 29.90" S	169° 59' 45.10" W
NUCZ00425	19° 32' 35.02" S	169° 59' 25.66" W
NUCZ00426	19° 32' 39.90" S	169° 59' 06.15" W

Point Identifier	Latitude	Longitude
------------------	----------	-----------



Point Identifier	Latitude	Longitude
------------------	----------	-----------



PLATE 4. MARITIME LIMITS OF NIUE

ZONE OF NIUE

MARITIME LIMITS OF NIUE



Approved by the Cabinet of Ministers at the Cabinet Chambers, Fala Fala, A.L.C. 11

