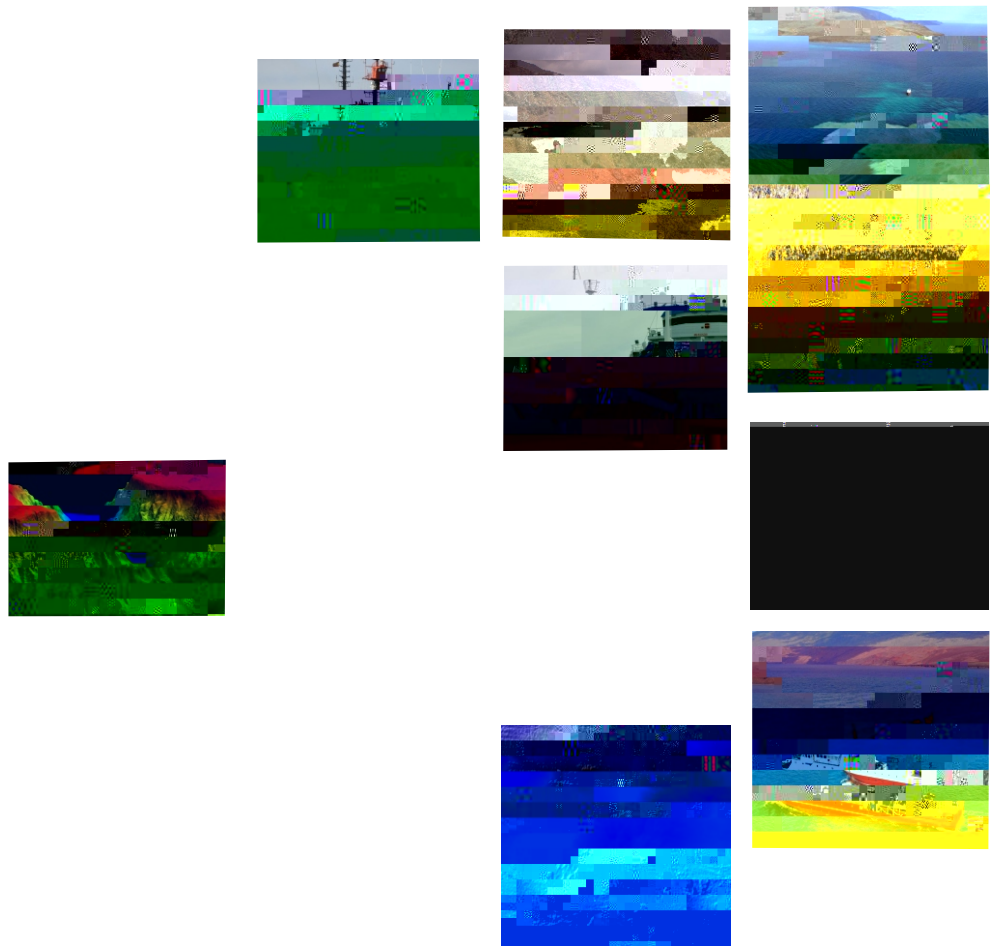


Part I. Executive Summary

Partial Submission of Data and
on the Limits of the Continental Shelf of
to the West of the Canary Islands
pursuant to Art VI and Annex of United
Nations Convention on the Law of the Sea



2014

Submission to the Commission on the Limits of the Continental Shelf of the
Continental Shelf of the Canary Islands
the organization of the United Nations' 85p



Continental Shelf of Spain in the area



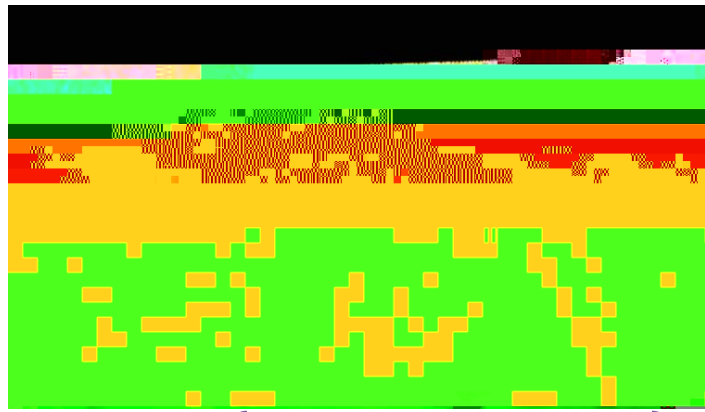
1. ...
 ...
 ...
 ...
 ...
 ...
 ...
 ...
 ...
 ...
 ...

17. ...
 ...
 ...
 ...
 ...
 ...
 ...
 ...
 ...

Oceanographic
 vessel
 Miguel Oliver

18. ...
 ...
 ...
 ...
 ...
 ...
 ...
 ...

Table 1.1 ...
 ...
 ...



† /

**3-D image of parametric
 echosounder and
 multibeam bathymetry
 obtained during the
 eruption of the submarine
 volcano at El Hierro Island**

SPLOS/183

Oceanographic survey name	Year	Research vessel (R/V)	Type of multibeam /parametric echosounders	Length of lines (km)	Samples (type)	Seismic reflection (km)
CANARIAS_1988	1999					



Figure 1: 3 D view of the Canary Islands (global bathymetry taken from GEBCO GDA,

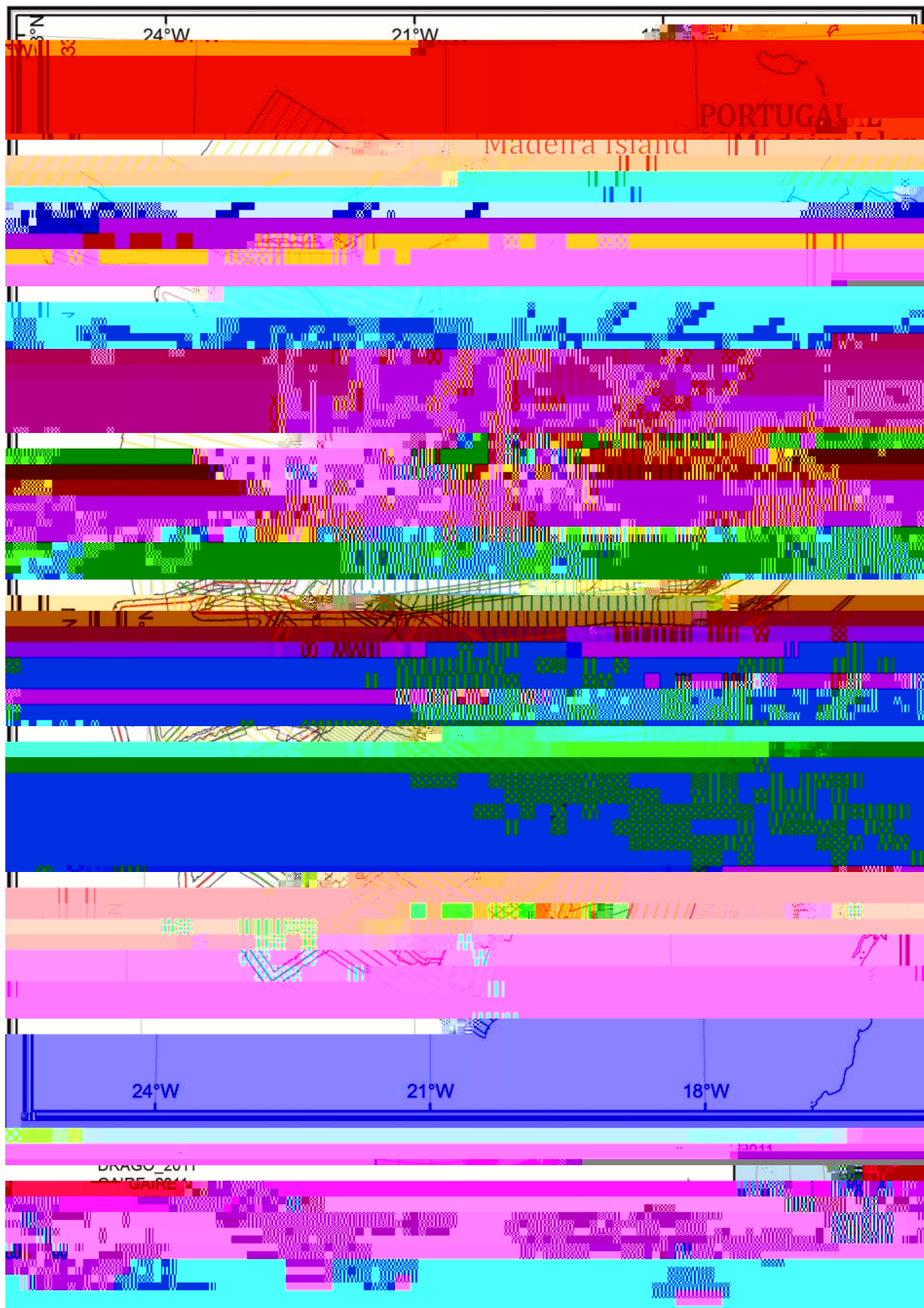


Figure 2: Layout of the oceanographic surveys carried out to the West of the Canary Islands, 1999–2013



Continental Shelf of Spain in the area to the West of the Canary Islands



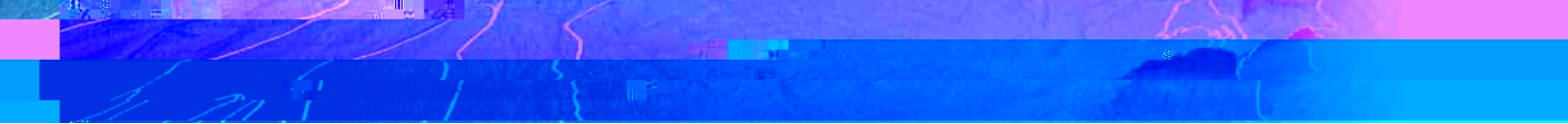




6. State bodies responsible for the preparation of the



The R/V Sarmiento de Gamboa over the submarine eruption of El Hierro during the GAIRE oceanographic survey (2011)





7. Detailed description of the outer limits of the continental shelf beyond 200 M in the area to the West of the Canary Islands

7.1 **Fig. 3, 4, 5** **Annex I**

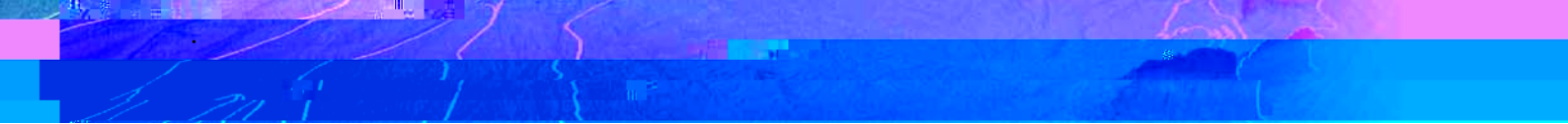
7.2 **Fig. 6**

Executive Summary

88W 01 XXXXX M M IIII

Continental Shelf of Spain in the area to the West of the Canary Islands

Figure 3: Overview of the outer limits of the continental shelf of Spain beyond 200 nautical miles in the area to the West of the Canary Islands.



Continental Shelf of Spain in the area to the West of the Canary Islands

Figure 5:

^bZxt(xt

Annex 1. List of coordinates of the fixed points $T/TT11Tf11.9951001$



FP	Latitude North	Longitud West	Method, Article 76	Distance (M)
27		21.64084	Fixed point at 60M from FOS_1, Art.76(4) (a) (ii)	1.00

FP	Latitude North	Longitud West	Method, Article 76	Distance (M)
56	32.443662	22.17587	Fixed point at 60M from FOS_1, Art.76(4) (a) (ii)	
57	32.444918		Fixed point at 60M from FOS_1, Art.76(4) (a) (ii)	1.00
58				





FP	
----	--



FP	Latitude North	Longitud West	Method, Article 76	Distance (M)
	29.892501	24.560416	Fixed point at 350 M constraint distance from 60 M + FOS_9, Art 76(5)	100
			Fixed point at 350 M constraint distance from 60 M + FOS_9,	



FP	Latitude North	Longitud West	Method, Article 76	Distance (M)
247				



FP	Latitude North	Longitud West	Method, Article 76	Distance (M)
275	25.522540	24.187928	Fixed point on the 350 M constraint line, Art.76(5)	1.00
276	25.507187	24.180636	Fixed point on the 350 M constraint line, Art.76(5)	1.00
277	25.491853	24.173298	Fixed point on the 350 M constraint line, Art.76(5)	1.00
278	25.476538	24.165914	Fixed point on the 350 M constraint line, Art.76(5)	1.00
279	25.461241	24.158484	Fixed point on the 350 M constraint line, Art.76(5)	1.00
280	25.445963	24.151008	Fixed point on the 350 M constraint line, Art.76(5)	1.00
281	25.430704	24.143486	Fixed point at 350 M constraint distance from 60 M + FOS_25, Art.76(5)	1.00
282	25.415464	24.135918	Fixed point at 350 M constraint distance from 60 M + FOS_25, Art.76(5)	1.00
283	25.400243	24.128304	Fixed point at 350 M constraint distance from 60 M + FOS_25, Art.76(5)	1.00
284	25.385042	24.120644	Fixed point at 350 M constraint distance from 60 M + FOS_25, Art.76(5)	1.00
285	25.369860	24.112939	Fixed point at 350 M constraint distance from 60 M + FOS_25, Art.76(5)	1.00
286	25.354698	24.105188	Fixed point at 350 M constraint distance from 60 M + FOS_25, Art.76(5)	1.00
287	25.339555	24.097391	Fixed point at 350 M constraint distance from 60 M + FOS_25, Art.76(5)	1.00
288	25.324432	24.089549	Fixed point at 350 M constraint distance from 60 M + FOS_25, Art.76(5)	1.00
289	25.309329	24.081662	Fixed point at 350 M constraint distance from 60 M + FOS_25, Art.76(5)	1.00
290	25.294246	24.073729	Fixed point at 350 M constraint distance from 60 M + FOS_25, Art.76(5)	1.00
291	25.279183	24.065751	Fixed point at 350 M constraint distance from 60 M + FOS_25, Art.76(5)	1.00
292	25.264141	24.057728	Fixed point at 350 M constraint distance from 60 M + FOS_25, Art.76(5)	1.00
293	25.249118	24.049660	Fixed point at 350 M constraint distance from 60 M + FOS_25, Art.76(5)	1.00



Executive Summary

88W 01 XXXXX M M IIII



FP	Latitude North	Longitud West	Method, Article 76	Distance (M)
381	24.019850	23.172748	Fixed point on the 350, u	



FP	Latitude	Longitud West	Method, Article 76	Distance (M)
----	----------	------------------	-----------------------	-----------------