

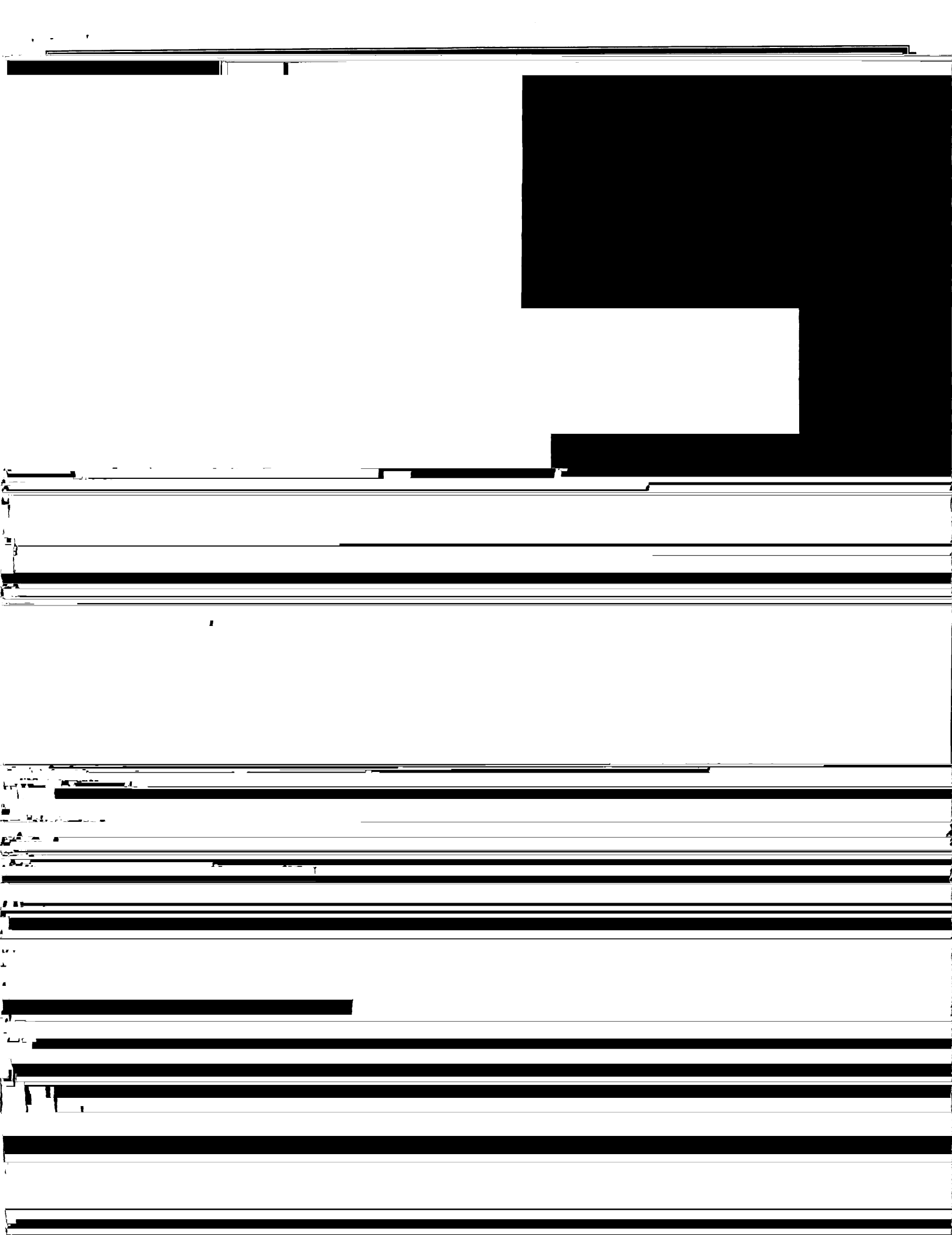
Text block located below the left graphic element.

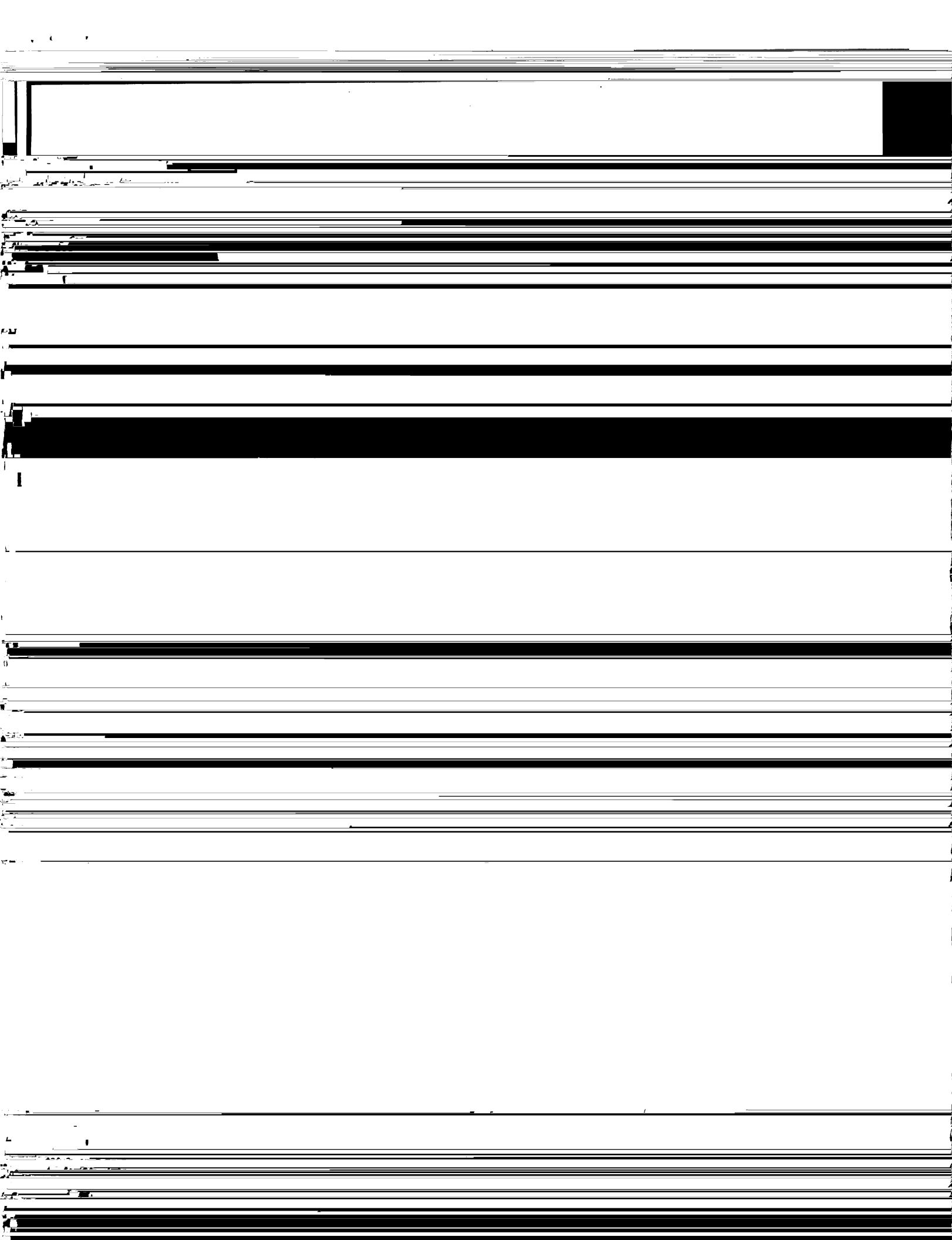
Text block located in the middle of the page.

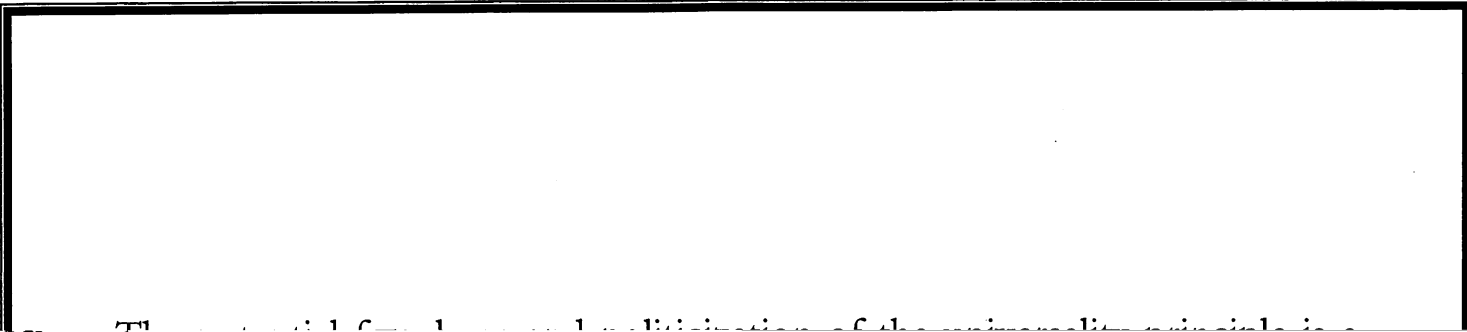
Text block located in the lower middle section of the page.

Text block located in the lower middle section of the page.

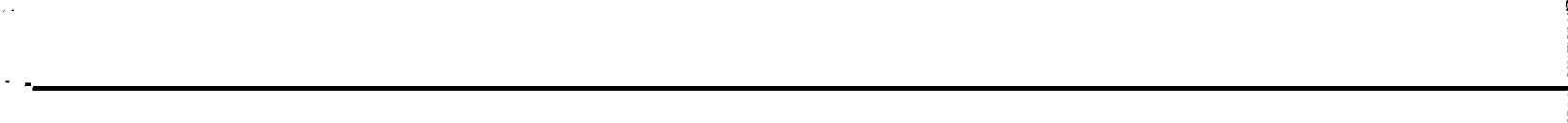
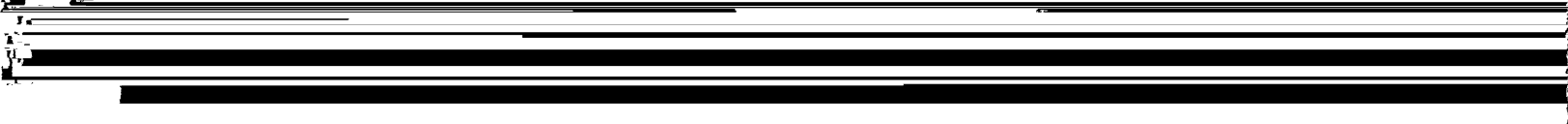
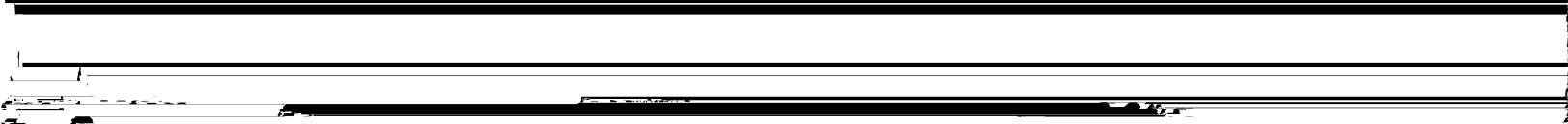
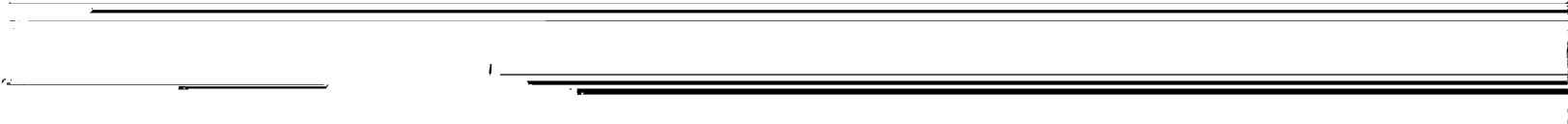
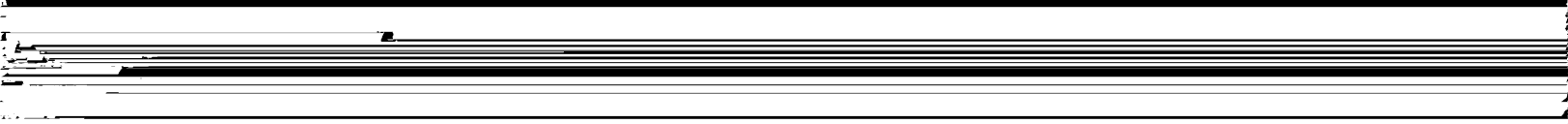
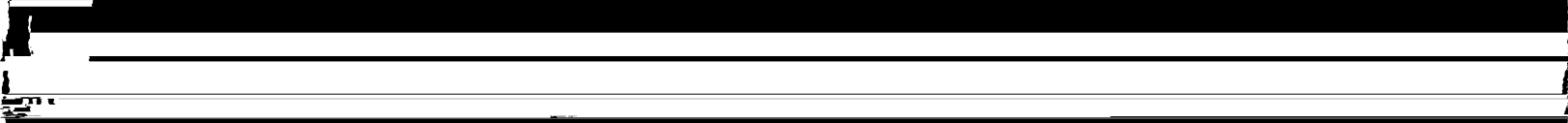
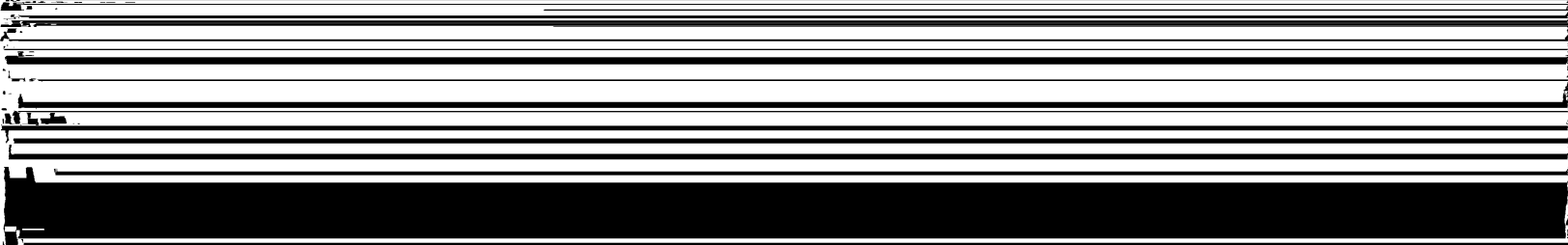
Text block located in the bottom right corner of the page.







THE



Mr. Chairman

In view of addressing confusion in the UJ, African countries through AU adopted the African Model Law on Universal Jurisdiction, over International Crimes to assist member states to adopt and strengthen national legislations on the prosecution of those accused of International Crimes. This model law offers us a template for developing UJ legislation, which our countries can adapt to suit our domestic peculiarities. The model law has the potential to ensure that our laws on UJ are harmonized in content, thereby minimizing potential clashes similar to those brought

2. In cases where political manipulation is suspected, my delegation believes that there must be a system of review where by an aggrieved

[REDACTED]