









- 
- 
- 
-



























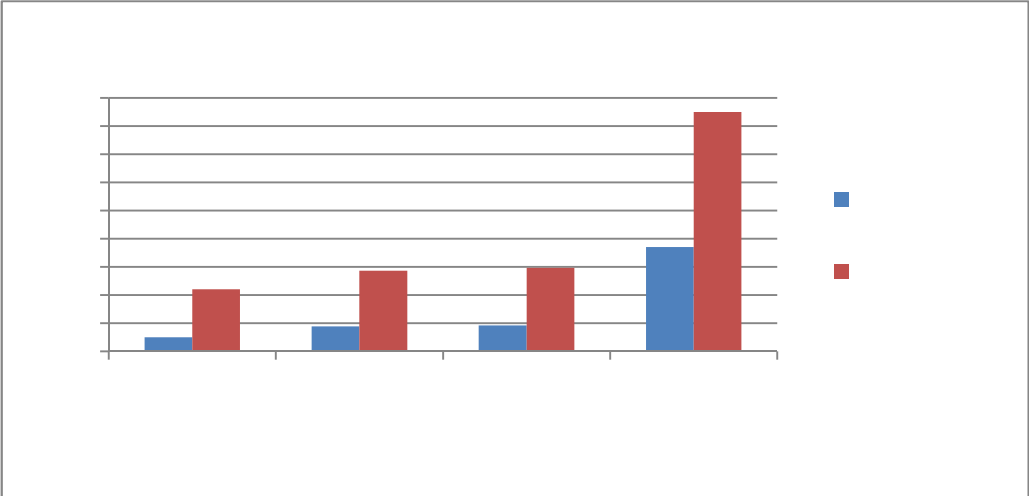
|

|









•

•

•



•

•

•

•

•

•













•

---



















- 
- 
- 
-











x x - x - x

x- x-

..

-		





	FDI	FDI	Fixed Capital	Fixed Capital
InvClim1	-1.593 (-1.39)		2.256 (1.05)	
InvClim2:				
admin		-1.004 (-0.86)		-5.140 (-1.44)
guarantees		-0.059 (-0.09)		1.939* (1.98)
regimes		-0.547** (-2.46)		-0.981** (-2.22)
regular holiday		-0.123 (-0.42)		-1.285 (-1.79)
export holiday		0.057 (1.40)		0.200** (2.39)
CIT rate	0.268 (1.19)	0.010 (0.12)	0.486 (1.11)	0.103 (0.35)
GDP	-0.001 (-0.79)	0.000 (0.38)	-0.002 (-1.71)	-0.000 (-0.42)
GDP growth	0.144* (2.02)	0.089 (1.53)	0.028 (0.18)	-0.099 (-0.59)
GDPpc	-12.945 (-1.41)	0.812 (0.17)	-11.960 (-1.08)	16.776** (2.65)
Gov Cons Exp	0.123 (0.37)	-0.194 (-1.26)	0.169 (0.48)	-0.265 (-1.63)
inflation	0.201 (1.47)	0.076 (1.38)	0.173 (0.93)	0.194 (0.90)
population	-0.263 (-0.26)	-0.697 (-1.25)	3.924 (1.75)	3.020* (1.88)
openess	1.827 (0.88)	-0.282 (-0.61)	1.620 (0.68)	-1.579 (-1.34)
ToT	0.009	-0.004	0.035	0.012



---

---

---

---



