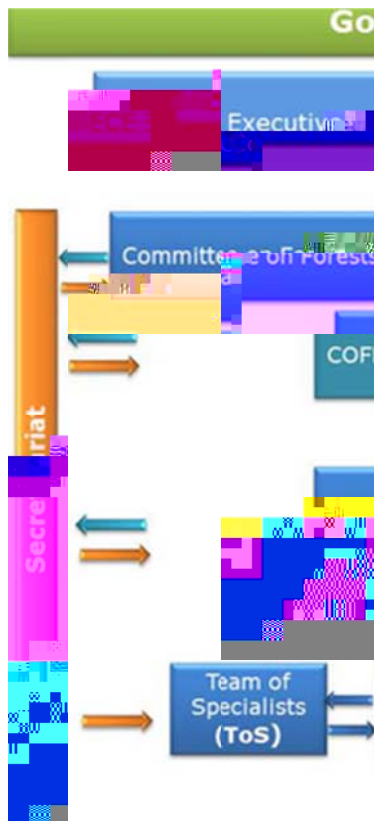


18 January 2016

In reference to your request on submission of inputs related to the ECOSOC Resolution 2015/33,

Annex 1: Governance of the joint UNECE a



The UNECE **Committee on Forests and the Commission (EFC)** work together to strengthen the Europe, Central Asia and the Caucasus and North Africa. The UNECE and FAO jointly provide the **secretariat** team to support the Forestry and Timber Section, located in Geneva.

The **Joint UNECE/FAO Working Party**

is a subsidiary body of COFFI and EFC and meets annually. The JWPFSM meets annually to discuss the work of the Working Party and identifies priorities for action. For more information on the work of the JWPFSM, please click on the [link](#). For more information on the Team of Specialists, please click [here](#).

The **joint bureaux** (Joint meeting of the UNECE/FAO Working Party) provide consideration and guidance to the Secretariat.

of COFFI and EFC. For a list of